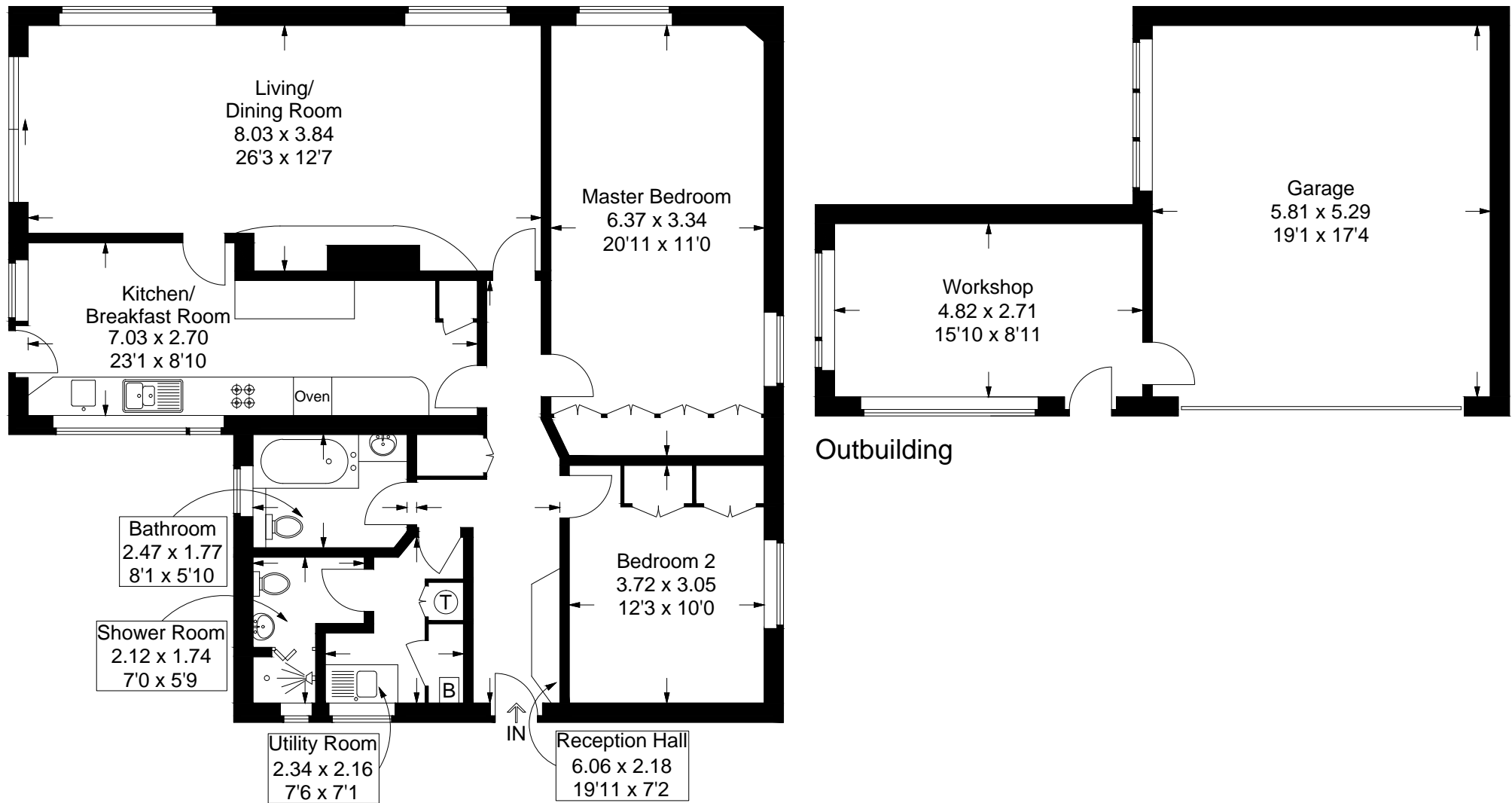
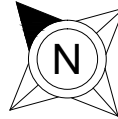


# Rosemary Way, Horndean

Approximate Gross Internal Area = 106.9 sq m / 1151 sq ft

Outbuilding = 45 sq m / 484 sq ft

Total = 151.9 sq m / 1635 sq ft



## Ground Floor

This plan is for layout guidance only. Not drawn to scale unless stated. Windows and door openings are approximate. Whilst every care is taken in the preparation of this plan, please check all dimensions, shapes and compass bearings before making any decisions reliant upon them.